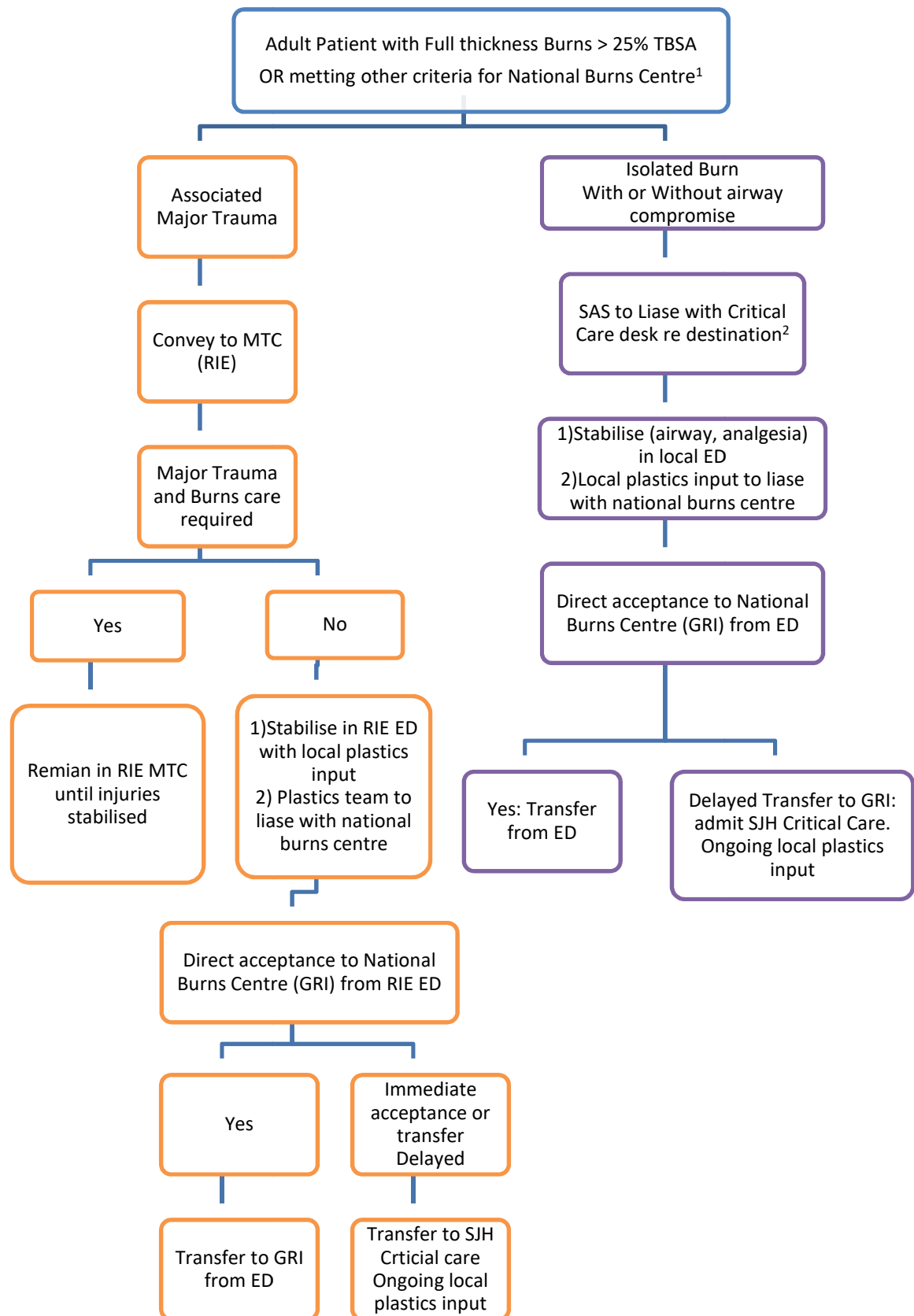


## NHS Lothian Adult Major Burns Pathway



<sup>1</sup> <https://www.cobis.scot.nhs.uk/wp-content/uploads/2022/01/Referral-Criteria-for-Transfer-of-Patients-to-National-Burn-Centre-in-Scotland.pdf>

<sup>2</sup> Should the airway become compromised and cannot be managed, consider conveying/diverting to the nearest locally designated Emergency Department.