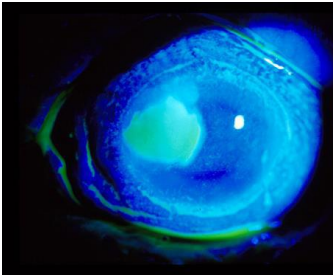
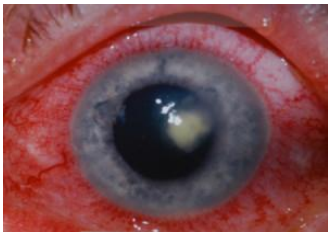


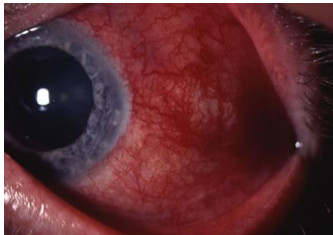
Red eye diagnostic algorithm



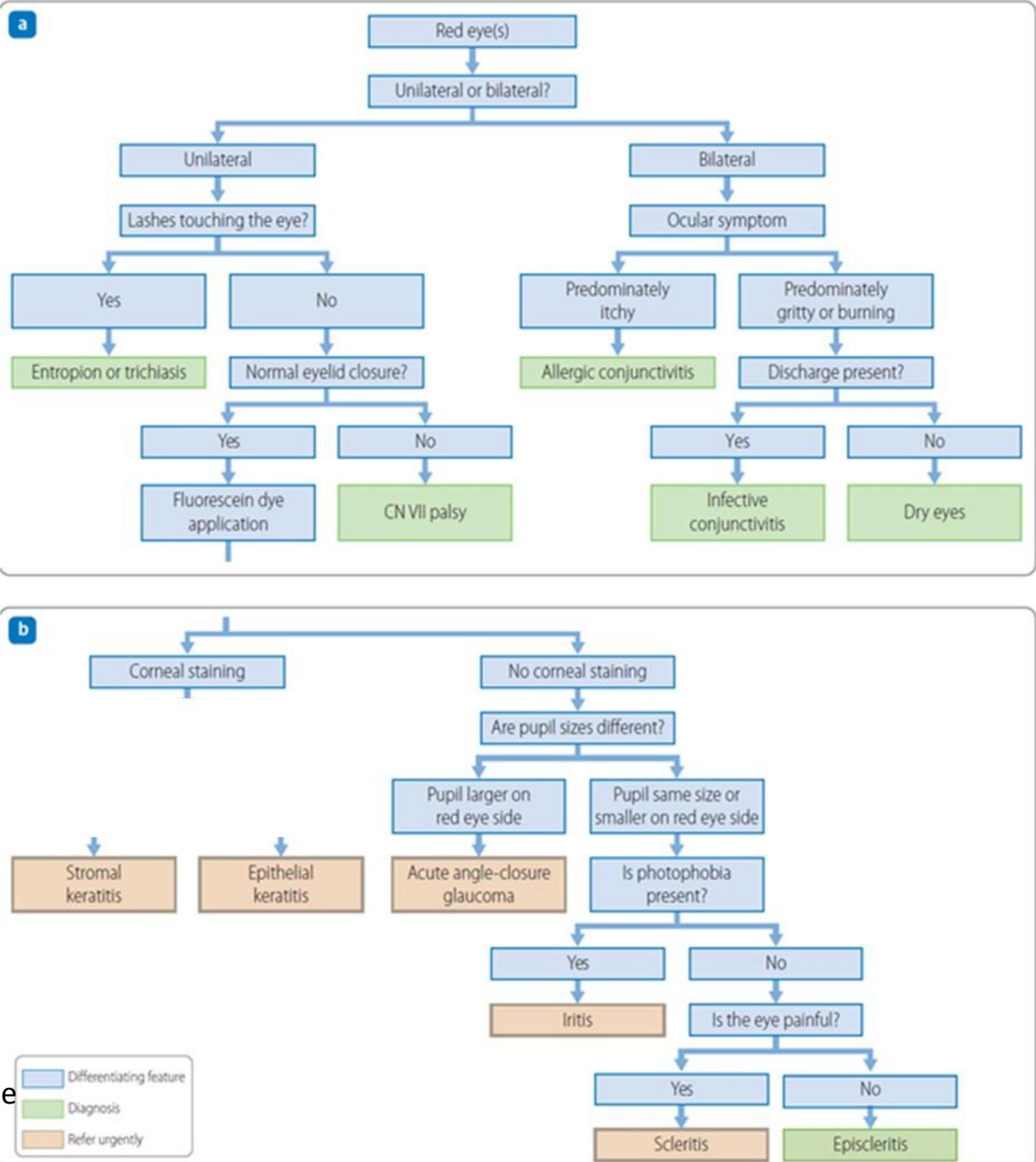
Corneal epithelial defect staining with 1% fluorescein (keratitis)



Corneal epithelial defect with opacity (corneal ulcer/keratitis)



Scleritis (usually in patients with co-existing autoimmune pathology)



Ophthalmology on-call service for RIE ED:

0830-1630 Mon-Fri  
PAEP Triage Nurse

1630-2300 Mon-Thurs  
SHO on-call

2300-0830 Mon-Thurs  
Registrar on-call

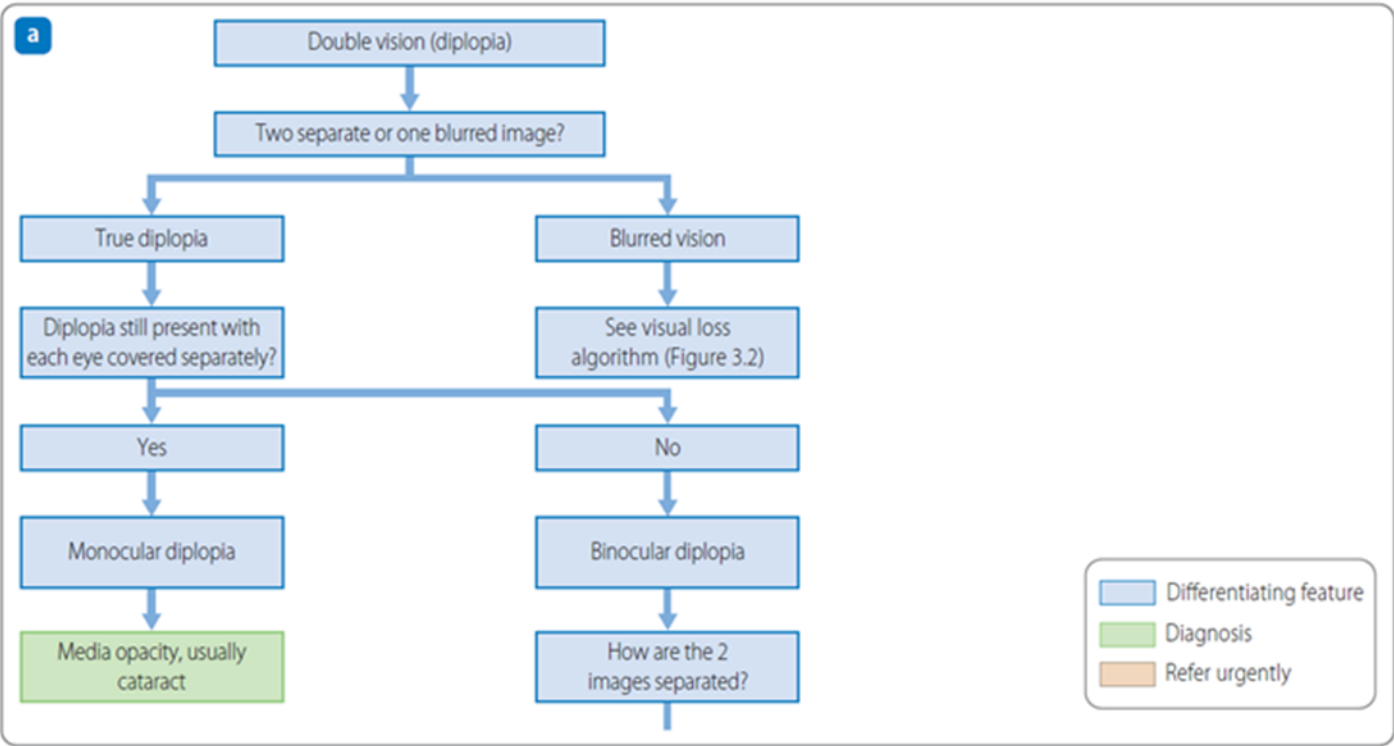
Weekend (from 1630 Fri)  
SHO on-call

For SJH ED:

0830-1630 Mon-Fri  
OPD1 SJH Charge Nurse

1630-0830 Mon-Fri and Weekend  
Registrar on-call

Double vision  
diagnostic algorithm



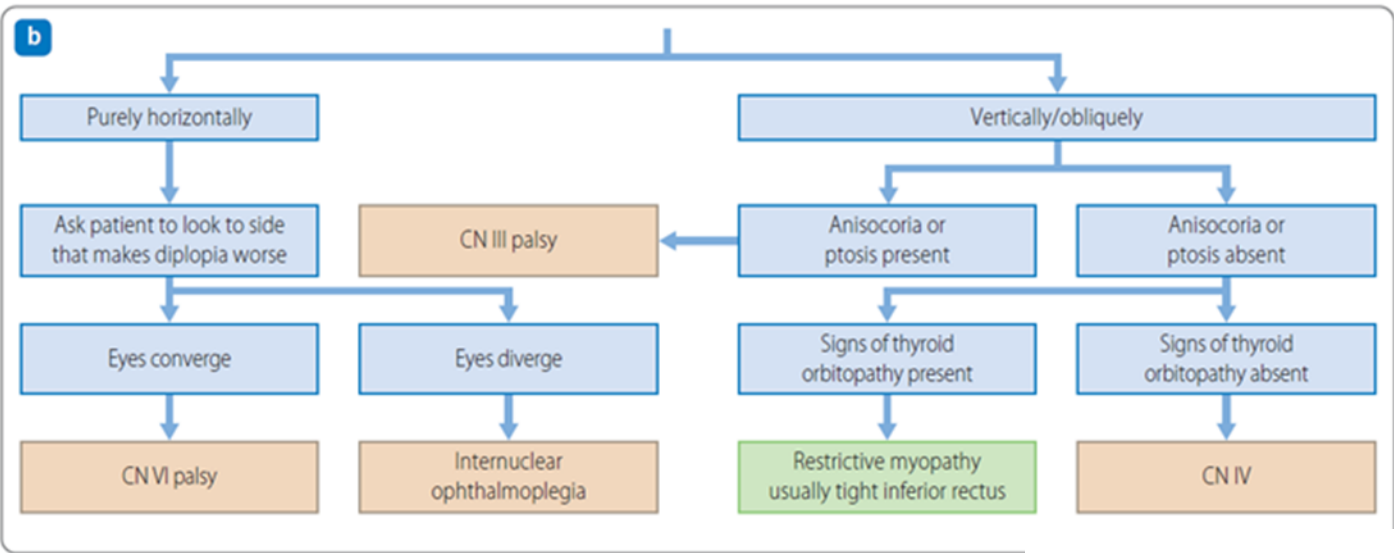
Ophthalmology on-call service for RIE ED:

0830-1630 Mon-Fri  
PAEP Triage Nurse

1630-2300 Mon-Thurs  
SHO on-call

2300-0830 Mon-Thurs  
Registrar on-call

Weekend (from 1630 Fri)  
SHO on-call



For SJH ED:

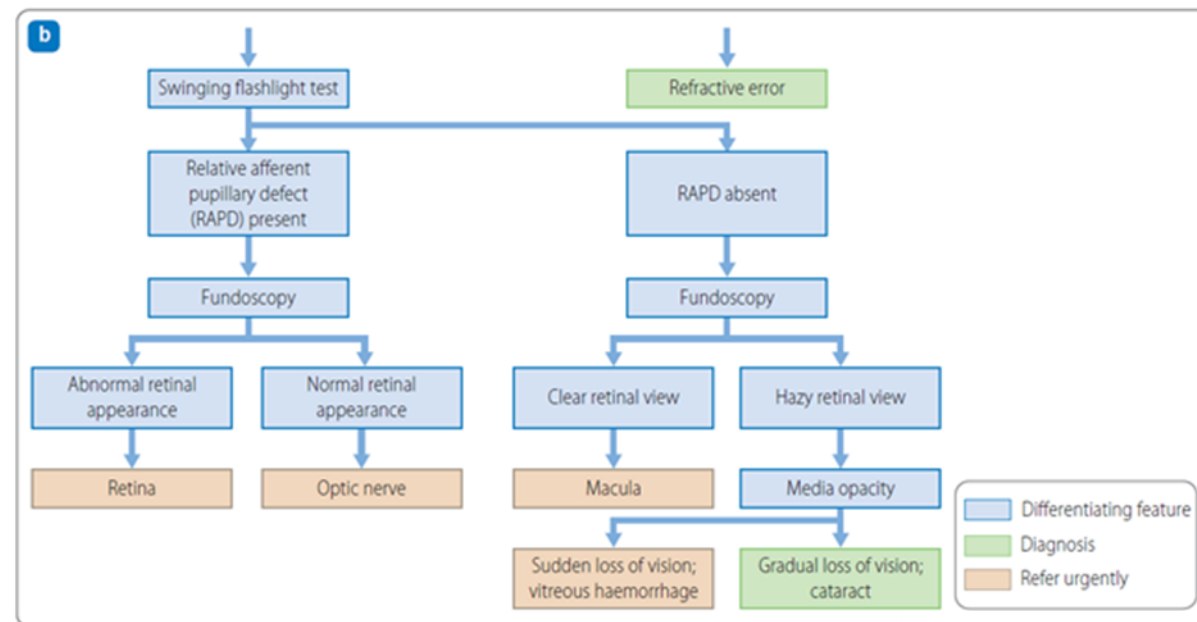
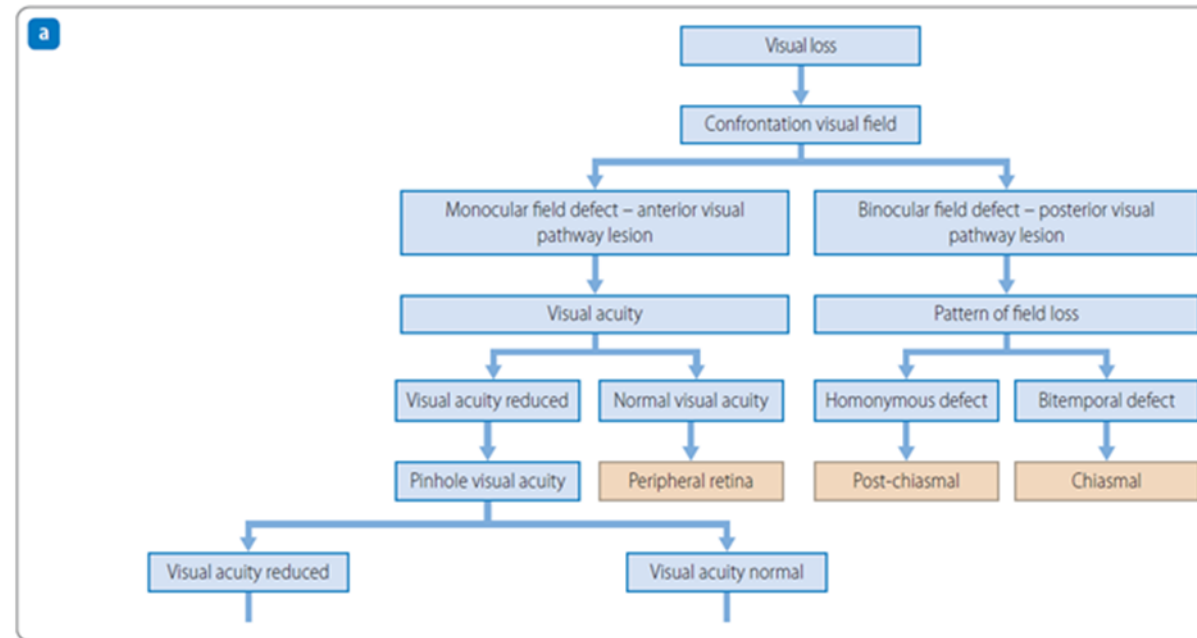
0830-1630 Mon-Fri  
OPD1 SJH Charge Nurse

1630-0830 Mon-Fri and Weekend  
Registrar on-call

N.B. Painful 3<sup>rd</sup> nerve palsies  
require urgent angiography  
to rule out an aneurysmal  
cause.

Anisocoria = unequal pupils.

# Visual loss diagnostic algorithm



RAPD example:  
[https://www.youtube.com/watch?v=W\\_rNYqNH3b3A](https://www.youtube.com/watch?v=W_rNYqNH3b3A)

Ophthalmology on-call service for RIE ED:

0830-1630 Mon-Fri  
 PAEP Triage Nurse

1630-2300 Mon-Thurs  
 SHO on-call

2300-0830 Mon-Thurs  
 Registrar on-call

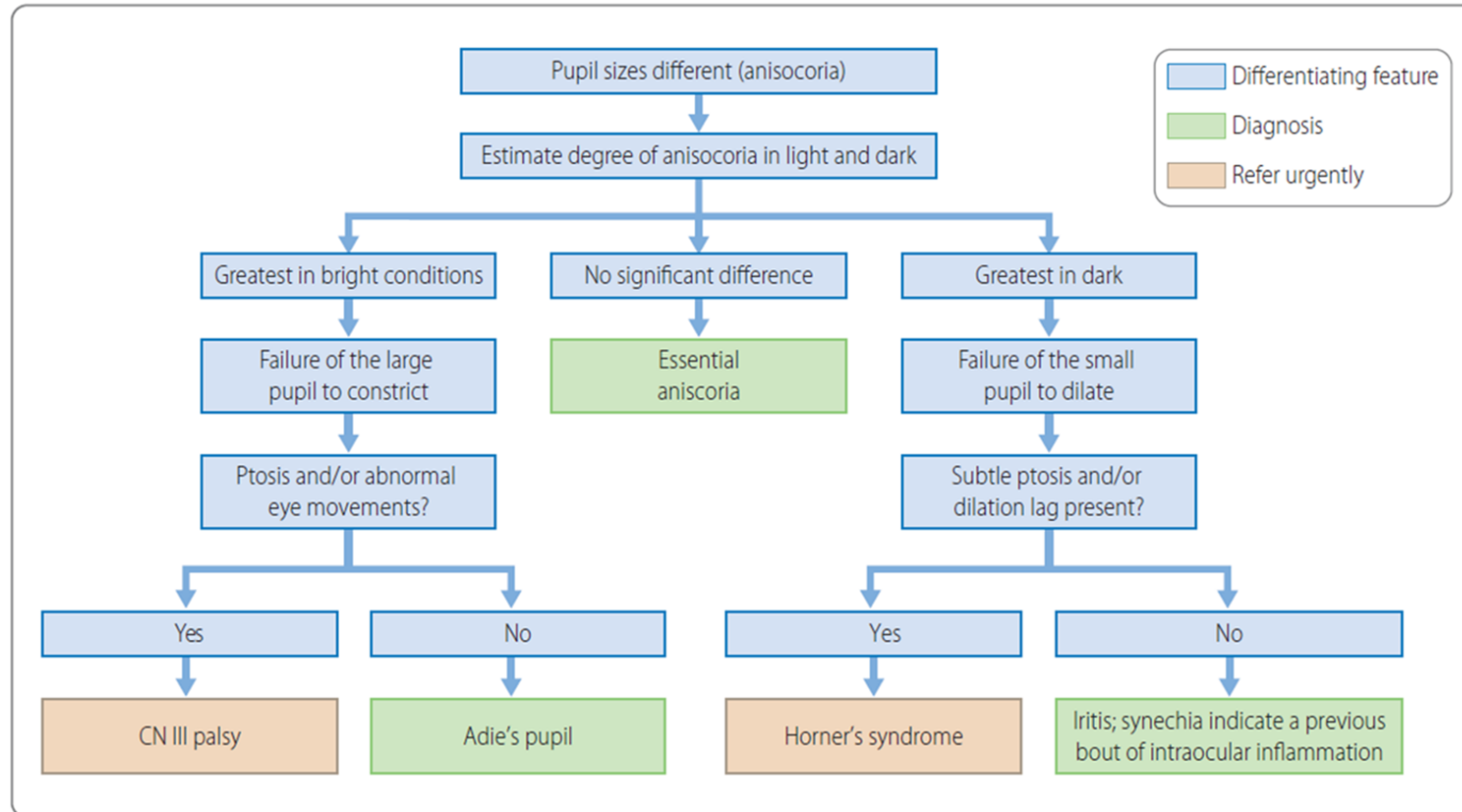
Weekend (from 1630 Fri)  
 SHO on-call

For SJH ED:

0830-1630 Mon-Fri  
 OPD1 SJH Charge Nurse

1630-0830 Mon-Fri and Weekend  
 Registrar on-call

# Anisocoria (unequal pupils) diagnostic algorithm



Ophthalmology on-call service for  
RIE ED:

0830-1630 Mon-Fri  
PAEP Triage Nurse

1630-2300 Mon-Thurs  
SHO on-call

2300-0830 Mon-Thurs  
Registrar on-call

Weekend (from 1630 Fri)  
SHO on-call

For SJH ED:

0830-1630 Mon-Fri  
OPD1 SJH Charge Nurse

1630-0830 Mon-Fri and Weekend  
Registrar on-call