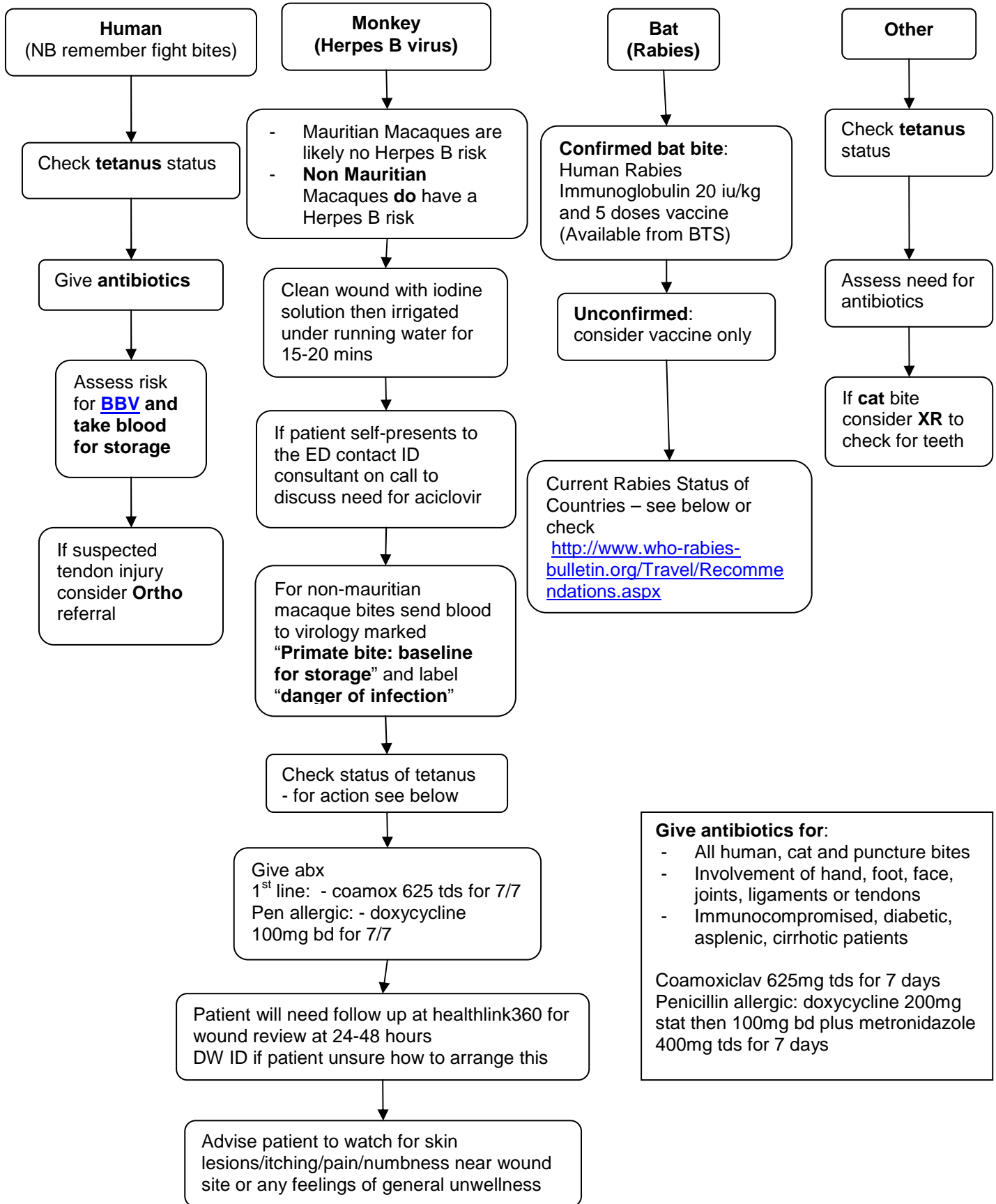


Bite Wounds



Rabies Information Adapted From Health Protection Scotland Protocol For Health Protection Management Of Rabies May 2007

Monkey Bite Information Adapted From Regional Infectious Diseases Unit WGH Protocol for Management of Monkey bites by Macaque Primates used in Medical Research 2014

Document written June 2013. Reviewed Dec 2018. Date of next review Dec 2019

Rabies Risk of Specific Countries

Relates to all animals **except bats**

NO RISK: Terrestrial animals originating from the following countries are considered 'no risk' for rabies (free of terrestrial rabies).

Europe: Belgium, Cyprus, Denmark, Faroe Islands, Finland, France, Gibraltar, Greece, Iceland, Ireland, Italy (except the northern and eastern borders), Luxembourg, Malta, Netherlands, Norway (mainland), mainland Spain (excluding North African coast) and the Canary Islands, Portugal, Sweden, and the United Kingdom.

Americas: Anguilla, Antigua & Barbuda, Bahamas, Barbados, Bermuda, British Virgin Islands, Cayman Islands, Dominica, Equatorial Guinea, French Antilles, Guadeloupe, Jamaica, Martinique, Montserrat, Netherlands Antilles, St Christopher & Nevis, St Lucia, St Martins, St Pierre & Miquelon, St Vincent & the Grenadines, Turks & Caicos, Uruguay, Virgin Islands.

Asia: Bahrain, Brunei Darussalam, Hong Kong, Japan, Kuwait, Maldives, Qatar, Singapore, Taiwan, United Arab Emirates.

Oceania: American Samoa, Australia, Cook Islands, Federated States of Micronesia, Fiji, French Polynesia, Guam, Kiribati, Marshall Islands, New Caledonia, New Zealand, Niue, Northern Mariana Islands, Palau, Papua New Guinea, Samoa, Sao Tome & Principe, Solomon Islands, Tonga, Vanuatu, Western Samoa.

LOW RISK: Terrestrial animals originating from the following countries are considered 'low risk' for rabies:

Austria, Bulgaria, Canada, Czech Republic, Germany, Switzerland, USA (the Centers for Disease Control, Atlanta, provides information on the risk of rabies in different parts of the USA).

HIGH RISK: Terrestrial animals originating from the following countries, where terrestrial rabies is enzootic, are considered 'high risk':

Colombia, Cuba, Dominican Republic, Ecuador, El Salvador, Guatemala, India, Parts of Mexico, Nepal, Pakistan, Peru, Philippines, Sri Lanka, Thailand, Turkey, Vietnam.

Countries in Asia, Africa and South America not otherwise mentioned as 'no risk' or 'low risk' should be considered as 'high risk'.