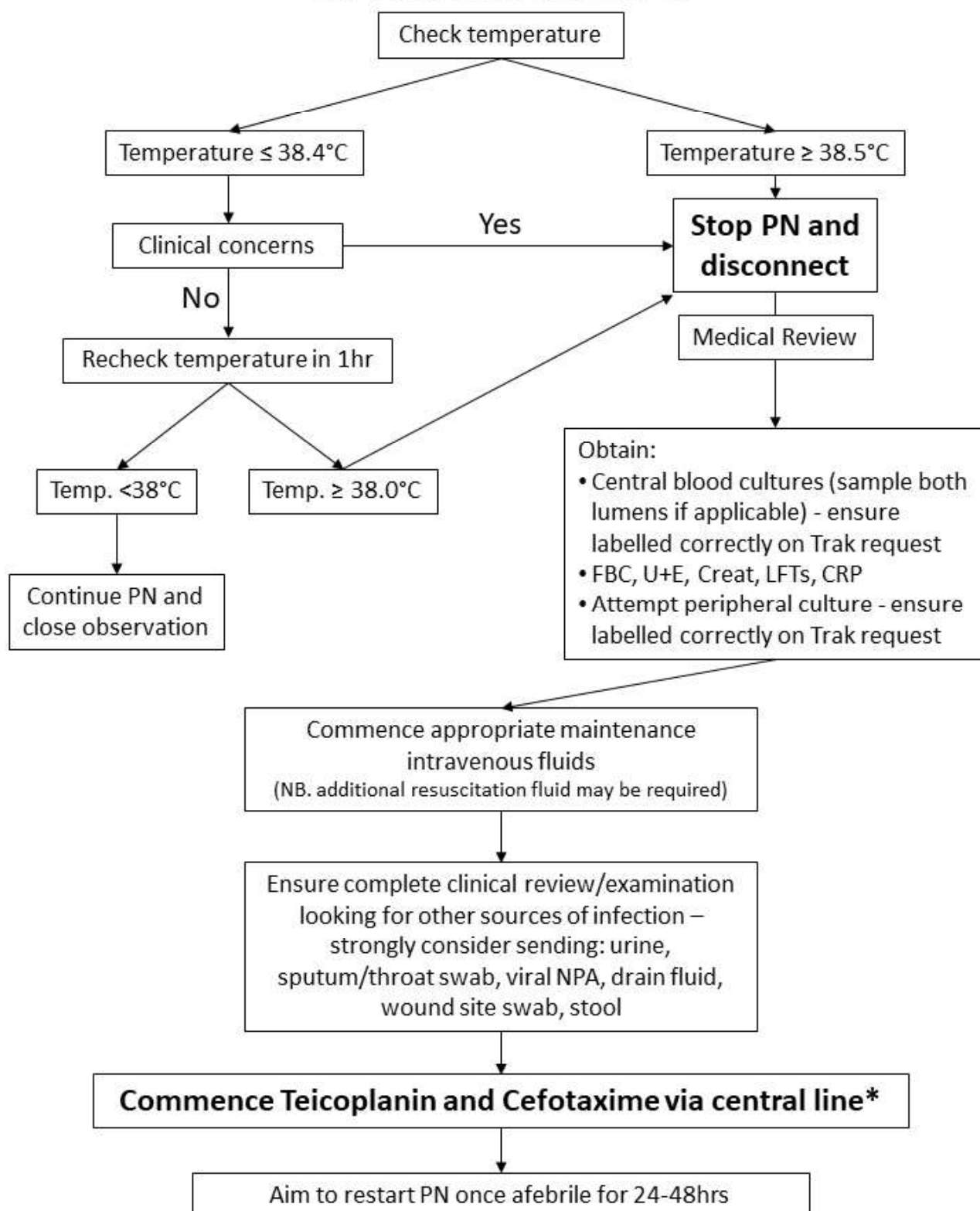


5.9 SUSPECTED LINE SEPSIS



- *Teicoplanin and Cefotaxime should be used as initial empirical therapy (unless known drug allergies). [Note this choice of antibiotics deviates from the current Antimicrobial Prescribing Guidelines in Children.] Growth of previous organisms may alter first-line choice, however if any doubt seek senior advice. BNFc and local policies should be used as reference for dosing. Antibiotic choice should be reviewed when full culture and sensitivity results are available.
- Skin and gut organisms can cause central line infections. Candida infections should also be considered in patients not responding to broad-spectrum antibiotics.